

BID ADDENDUM 1

May 29, 2023

Storm Drain Improvements
San Rafael High School
150 Third Street
San Rafael, California 94901

San Rafael City Schools
310 Nova Albion Way
San Rafael, California 94903

This addendum shall supersede all previously issued specifications, addenda, and drawings wherein contradicts same. All other conditions remain unchanged. The following changes, modifications, corrections, clarifications, and / or additions as set forth herein shall apply to the above documents and shall be made a part thereof and shall be subject to all the requirements thereof as though originally specified and / or shown.

Notice Regarding Bid Documents: All bids shall be based on drawings and specifications dated May 12, 2023, including this and subsequent addenda.

General:

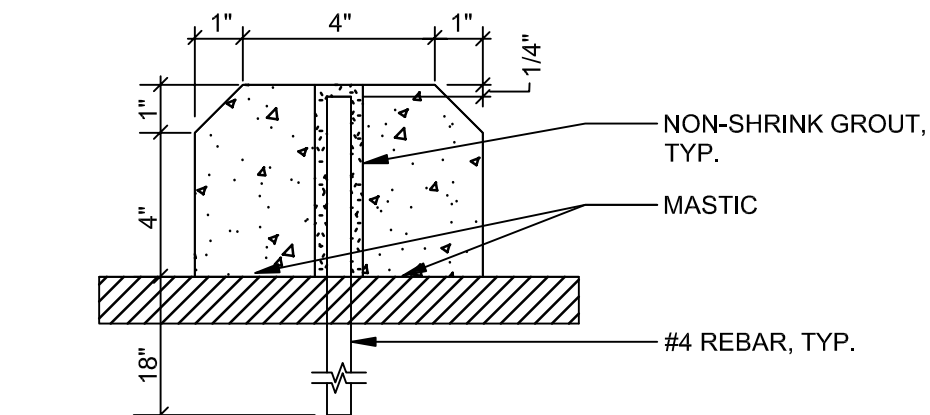
Additional site work details are provided, and revisions are made to the enlarged architectural plans to coordinate with work shown on the Civil and Landscape plans.

Drawings:

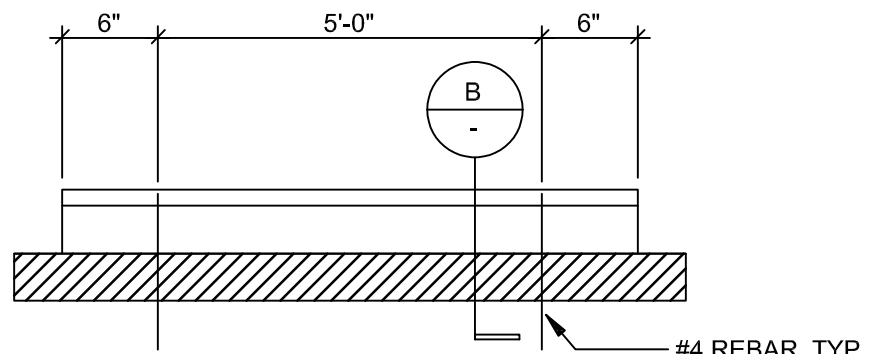
1. Sheet A1.02:
 - a. Added detail 3/A1.02 Wheel Stop, per keynote 32.05 (ASK-01)
 - b. Added detail 1/A1.02 Typ. Signpost and footing. Per keynote D2.13 (ASK-02)
 - c. Added detail 2/A1.02 Parking Stall, per keynote 32.03 (ASK-03)
 - d. Updated enlarged demo and new site plan to match the extent of curb demolition shown in the civil drawings and revised the extent of landscape demolition area to match what is shown in the landscape drawings. (ASK-04 AND ASK-05)

Attachments:

Sketch ASK-01, Wheel Stop Detail
Sketch ASK-02, Typ. Signpost and footing Detail
Sketch ASK-03, Parking Stall Detail
Sketch ASK-04, Enlarged Demo Site Plan
Sketch ASK-05, Enlarged Site Plan



(B) SECTION



(A) FRONT ELEVATION

3 WHEEL STOP DETAIL

Scale: 3"=1'-0"

SR SAN RAFAEL
CITY SCHOOLS

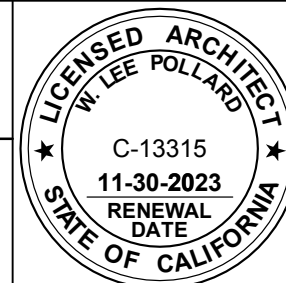
310 NOVA ALBION WAY
SAN RAFAEL, CA 94903
TEL: 415.492.3200 FAX: 415.492.3229

HYA Job No.

6005

Project STORM DRAIN IMPROVEMENTS
Facility SAN RAFAEL HIGH SCHOOL
150 3RD STREET, SAN RAFAEL, CA 94901

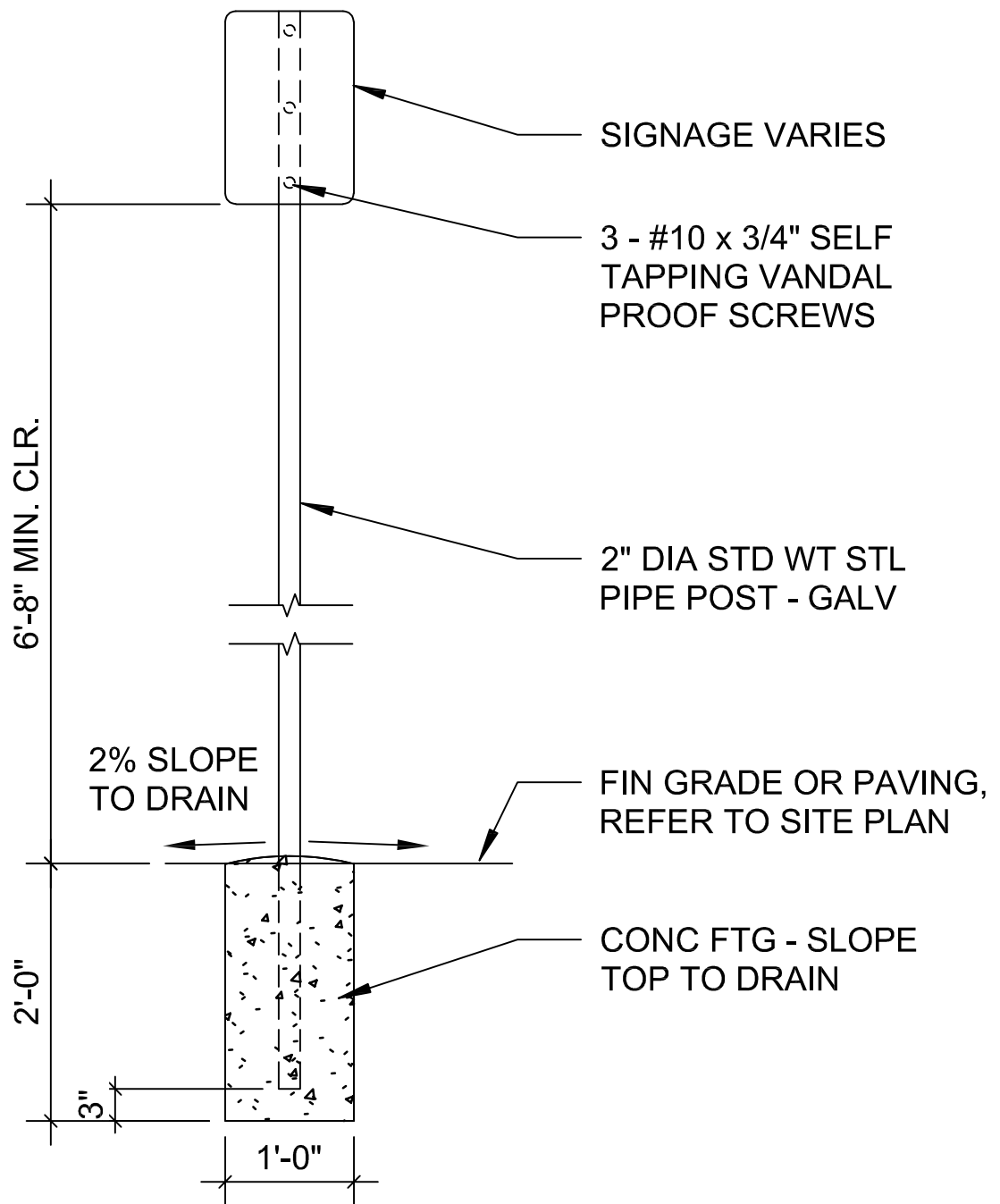
HY HIBSER YAMAUCHI
Architects, Inc.
2121 2nd Street, Suite C-108
Davis, CA 95618
530.758.1270 tel; 530.758.4789 fax



Drwn By BG
Ref. Dwg. 3/A1.02
Issue Date 05/29/2023

Sheet

ASK-01



1

TYP. SIGN POST AND FOOTING

Scale: 3/4"=1'-0"

SR SAN RAFAEL
CITY SCHOOLS

310 NOVA ALBION WAY
SAN RAFAEL, CA 94903
TEL: 415.492.3200 FAX: 415.492.3229

HYA Job No.

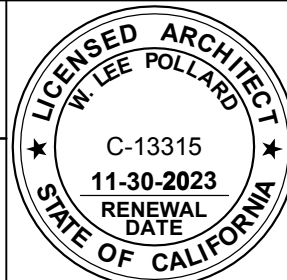
6005

Project STORM DRAIN IMPROVEMENTS
Facility SAN RAFAEL HIGH SCHOOL
150 3RD STREET, SAN RAFAEL, CA 94901



HIBSER YAMAUCHI
Architects, Inc.

2121 2nd Street, Suite C-108
Davis, CA 95618
530.758.1270 tel; 530.758.4789 fax



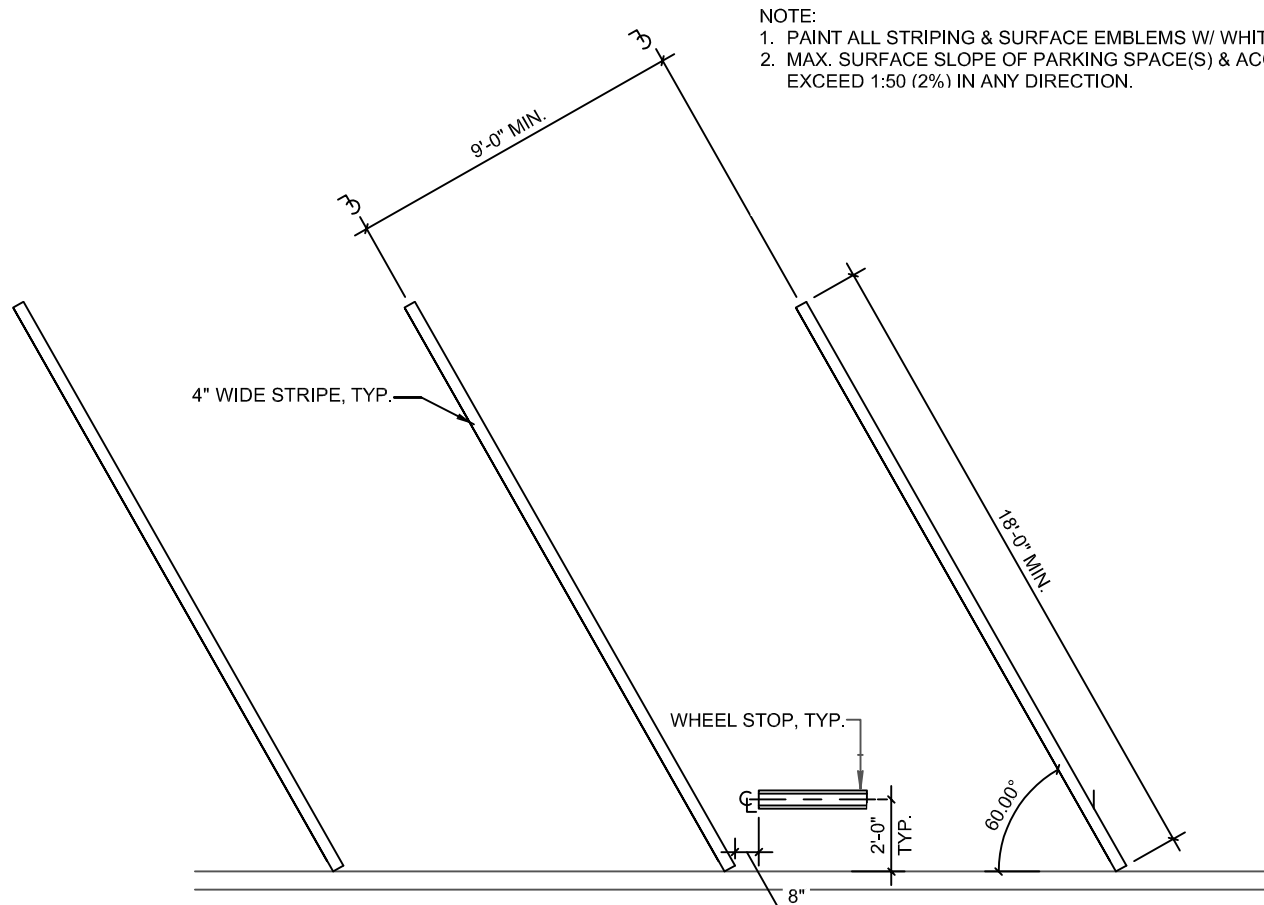
Drwn By BG

Ref. Dwg. 1/A1.02

Issue Date 5/29/2023

Sheet

ASK-02



2

PARKING STALL DETAIL

Scale: N.T.S

SR SAN RAFAEL
CITY SCHOOLS

310 NOVA ALBION WAY
SAN RAFAEL, CA 94903
TEL: 415.492.3200 FAX: 415.492.3229

HYA Job No.

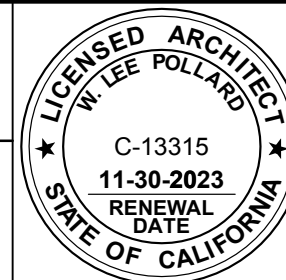
6005

Project STORM DRAIN IMPROVEMENTS
Facility SAN RAFAEL HIGH SCHOOL
150 3RD STREET, SAN RAFAEL, CA 94901



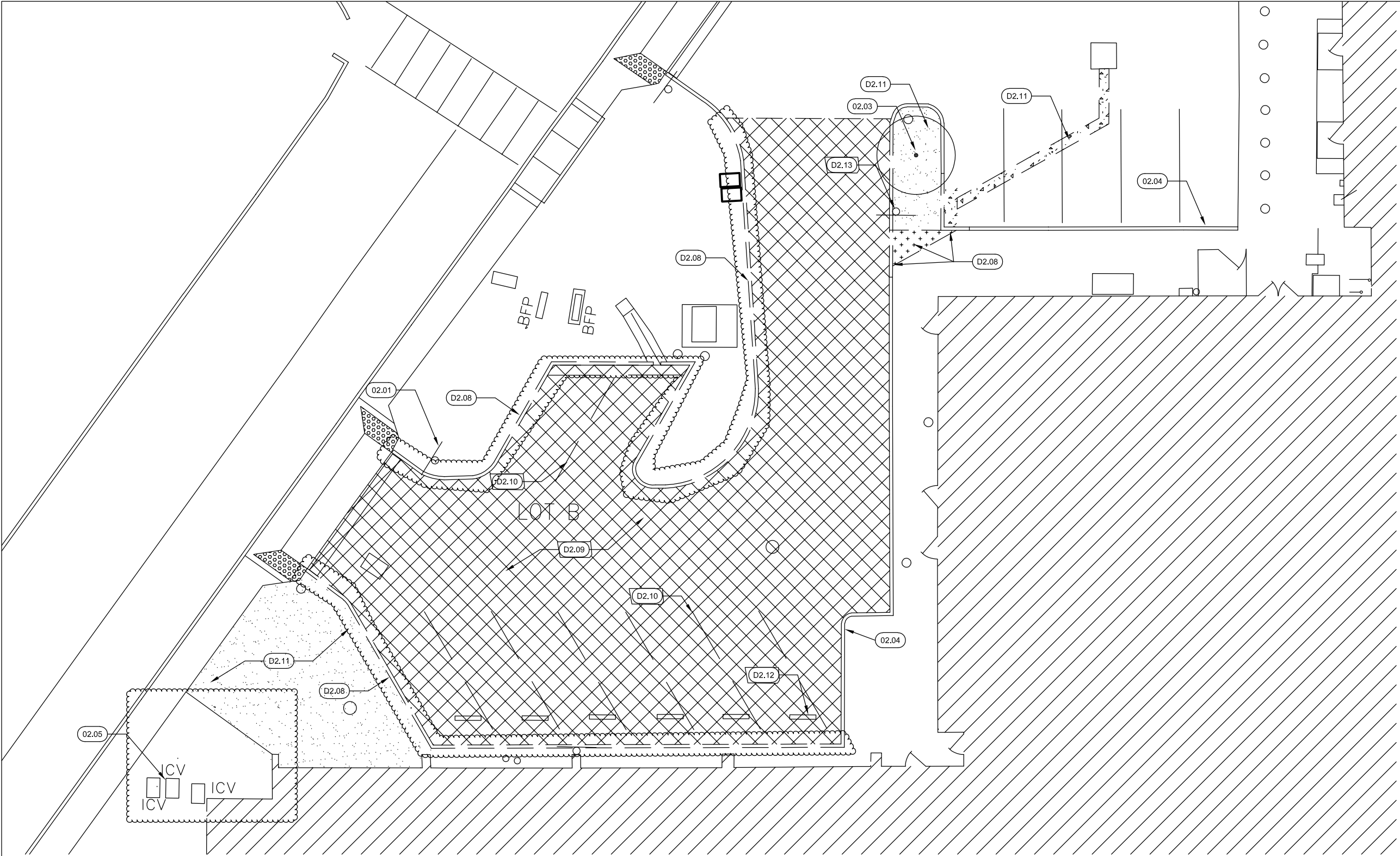
HIBSER YAMAUCHI
Architects, Inc.

2121 2nd Street, Suite C-108
Davis, CA 95618
530.758.1270 tel | 530.758.4789 fax



Drwn By BG
Ref. Dwg. 2/A1.02
Issue Date 05/29/2023
Sheet

ASK-03



27

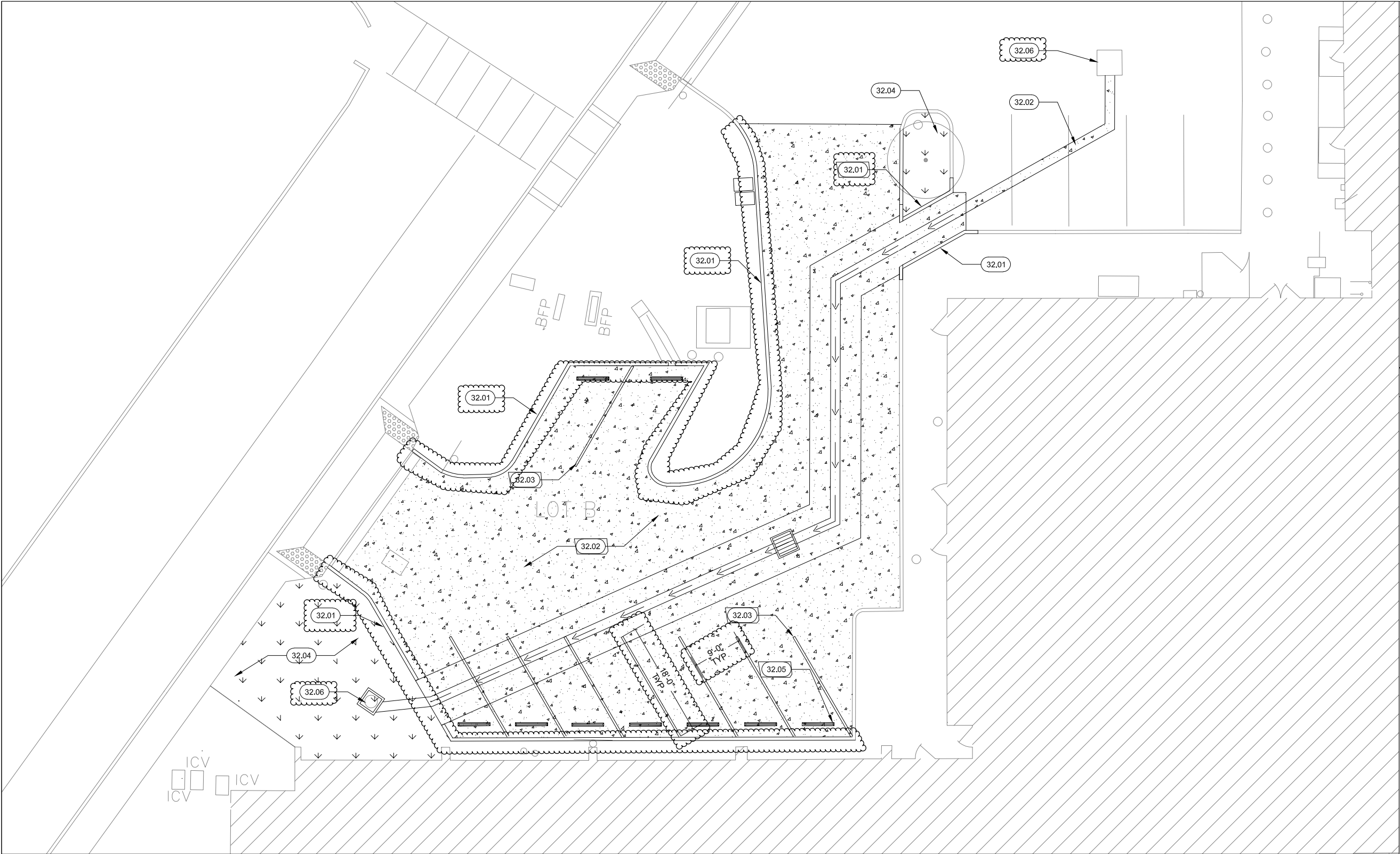
ENLARGED DEMO SITE PLAN

Scale: 1/6"=1'-0"

KEY NOTES	
02.01	(E) SIGN TO REMAIN, PROTECT IN PLACE
02.03	(E) TREE/ SHRUB TO REMAIN, S.L.D
02.04	(E) CURB TO REMAIN, U.O.N
02.05	(E) UTILITY BOX TO REMAIN, PROTECT IN PLACE
02.06	(E) GRADE TO REMAIN, S.C.D
D2.08	DEMO (E) SIDEWALK, SAWCUT AT BACK OF (E) CURB TO REPLACE SIDEWALK, S.C.D
D2.09	AC/ CONCRETE PAVING TO BE DEMOLISHED AND REGRADE, S.C,D
D2.10	REMOVE (E) STRIPING
D2.11	(E) AC/ CONCRETE/TURF/ PLANTING TO BE REMOVED FOR U/G UTILITY TRENCHING, S.C,D
D2.12	(E) WHEEL STOP TO BE REMOVED
D2.13	REMOVE AND RELOCATE (E) SIGN WITHIN SAME LANDSCAPE AREA
32.01	CONCRETE CURB, S.C,D
32.02	CONCRETE PAVING, S.C,D
32.03	4" STRIPING, PAINT WHITE, TYP. SEE 2/A1.02
32.04	LANDSCAPE FURNISHINGS TYP, S.L.P
32.05	NEW CONCRETE WHEEL STOP (9 TOTAL) SEE 3/A1.02
32.06	NEW SIDE OPENING TOP ON EXISTING DRAIN INLET, S.C,D

LEGEND	
	AREA OF AC PAVING DEMOLITION, SEE CIVIL DRAWINGS FOR COMPLETE AREA OF WORK.
	AREA CONCRETE SIDEWALK DEMOLITION, SEE CIVIL DRAWINGS FOR COMPLETE AREA OF WORK.
	AREA LANDSCAPE DEMOLITION, SEE LANDSCAPE DRAWINGS FOR COMPLETE AREA OF WORK.
	(N) CONCRETE PAVING, SCD
	(N) LANDSCAPE AREA, SLD

<div><p>SAN RAFAEL CITY SCHOOLS</p><p>310 NOVA ALBION WAY SAN RAFAEL, CA 94903 TEL: 415.492.3200 FAX: 415.492.3229</p></div> <div><p>HYA Job No. 6005</p></div>	<div><p>Project STORM DRAIN IMPROVEMENTS</p><p>Facility SAN RAFAEL HIGH SCHOOL 150 3RD STREET, SAN RAFAEL, CA 94901</p></div> <div><p>HIBSER YAMAUCHI Architects, Inc.</p><p>300 - 27th Street Oakland, CA 94612 510.446.2222 tel 510.446.2211 fax</p></div>	<div></div>	<div><p>Drwn By BG</p><p>Ref. Dwg. 27/A1.02</p><p>Issue Date 5/29/2023</p><p>Sheet</p></div>
			<div><p>ASK-04</p></div>



KEY NOTES	
02.01	(E) SIGN TO REMAIN, PROTECT IN PLACE
02.03	(E) TREE/ SHRUB TO REMAIN, S.L.D
02.04	(E) CURB TO REMAIN, U.O.N
02.05	(E) UTILITY BOX TO REMAIN, PROTECT IN PLACE
02.06	(E) GRADE TO REMAIN, S.C.D
D2.08	DEMO (E) SIDEWALK, SAWCUT AT BACK OF (E) CURB TO REPLACE SIDEWALK, S.C.D
D2.09	AC/ CONCRETE PAVING TO BE DEMOLISHED AND REGRADE, S.C,D
D2.10	REMOVE (E) STRIPING
D2.11	(E) AC/ CONCRETE/TURF/ PLANTING TO BE REMOVED FOR U/G UTILITY TRENCHING, S.C,D
D2.12	(E) WHEEL STOP TO BE REMOVED
D2.13	REMOVE AND RELOCATE (E) SIGN WITHIN SAME LANDSCAPE AREA
32.01	CONCRETE CURB, S.C,D
32.02	CONCRETE PAVING, S.C,D
32.03	4" STRIPING, PAINT WHITE, TYP. SEE 2/A1.02
32.04	LANDSCAPE FURNISHINGS TYP, S.L.P
32.05	NEW CONCRETE WHEEL STOP (9 TOTAL) SEE 3/A1.02
32.06	NEW SIDE OPENING TOP ON EXISTING DRAIN INLET, S.C,D

LEGEND	
	AREA OF AC PAVING DEMOLITION, SEE CIVIL DRAWINGS FOR COMPLETE AREA OF WORK.
	AREA CONCRETE SIDEWALK DEMOLITION, SEE CIVIL DRAWINGS FOR COMPLETE AREA OF WORK.
	AREA LANDSCAPE DEMOLITION, SEE LANDSCAPE DRAWINGS FOR COMPLETE AREA OF WORK.
	(N) CONCRETE PAVING, SCD
	(N) LANDSCAPE AREA, SLD

30

ENLARGED SITE PLAN

Scale: 1/6"=1'-0"

<div><div><div>SR</div><div>SAN RAFAEL CITY SCHOOLS</div></div><div>310 NOVA ALBION WAY SAN RAFAEL, CA 94903 TEL: 415.492.3200 FAX: 415.492.3229</div></div> <div>HYA Job No. 6005</div>	<div>Project STORM DRAIN IMPROVEMENTS</div> <div>Facility SAN RAFAEL HIGH SCHOOL 150 3RD STREET, SAN RAFAEL, CA 94901</div>	<div><div><div><div>LICENSED ARCHITECT</div><div>W. LEE POLLARD</div><div>C-13315</div><div>11-30-2023</div><div>RENEWAL DATE</div><div>STATE OF CALIFORNIA</div></div></div></div>	<div>Drwn By BG</div> <div>Ref. Dwg. 30/A1.02</div> <div>Issue Date 5/29/2023</div> <div>Sheet</div>
			<div>ASK-05</div>

HY

HIBSER YAMAUCHI Architects, Inc.

300 - 27th Street
Oakland, CA 94612
510.446.2222 tel | 510.446.2211 fax